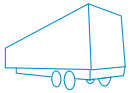


BEST-IN-CLASS COVERAGE



TRUCK



TRAILER



BUS/COACH



PICKUP



VAN

CUMMINS, FREIGHTLINER,
INTERNATIONAL, VOLVO/MACK,
CAT, PACCAR, KENWORTH,
ISUZU, HINO, FUSO, GM, FORD,
BLUE BIRD, MCI, VAN HOOL,
PREVOST...

Cojali USA, Inc.
2200 NW 102nd Avenue #4b
Doral, FL 33172, USA

Tel.: +1 (305) 960-7651
Toll free: 1-800-975-1865
Mexico: +52-5546312236
customersupport@jaltest.com

jaltest.com
cojaliusa.com

2020 V.1 EN



ALSO AVAILABLE DIAGNOSTICS FOR:



AG



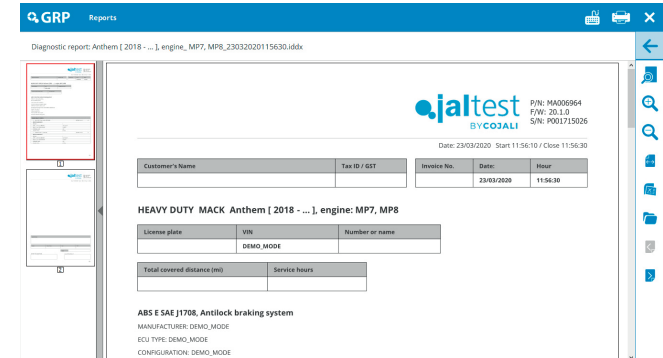
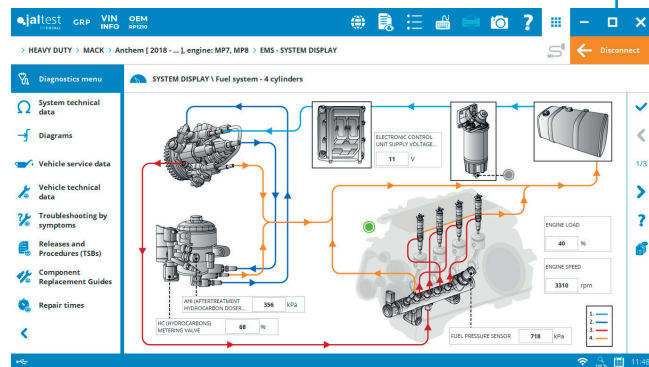
OFF-HIGHWAY



MARINE

ALL-MAKES DIAGNOSTICS

- Heavy, Medium and Light duty diagnostics.
- Automatic detection of systems and error codes.
- Real-time live data monitoring.
- Actuators and calibrations of components.
- Parameterizations.
- Operating time and consumption of the vehicle.
- Component adaptation and calibration.

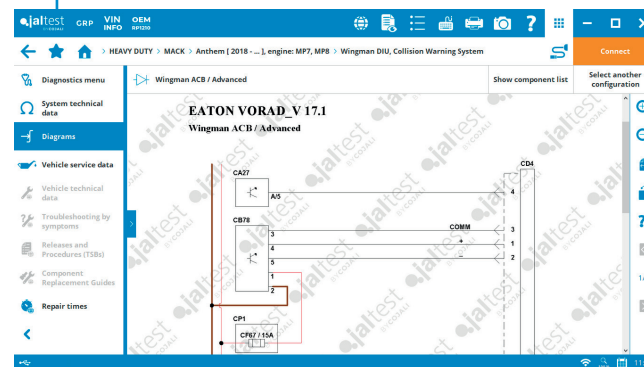


JALTEST GRP: SHOP MANAGEMENT SOLUTIONS

- Database synchronization between different devices, within the same shop, with data backups on external servers.
- Shop task management.
- Diagnostics, maintenance and task management and reporting.
- Customization of new brands and vehicle models.
- Access to the history of the vehicle.

TECHNICAL INFORMATION

- System technical data, (engine, transmission, brakes...).
- Interactive wiring diagrams.
- Technical bulletins.
- Repair guides: Troubleshooting by symptoms and codes.
- Maintenance data.
- Vehicle technical data (engine type...).



INTUITIVE & EASY TO USE CUSTOMER SUPPORT TRAINING